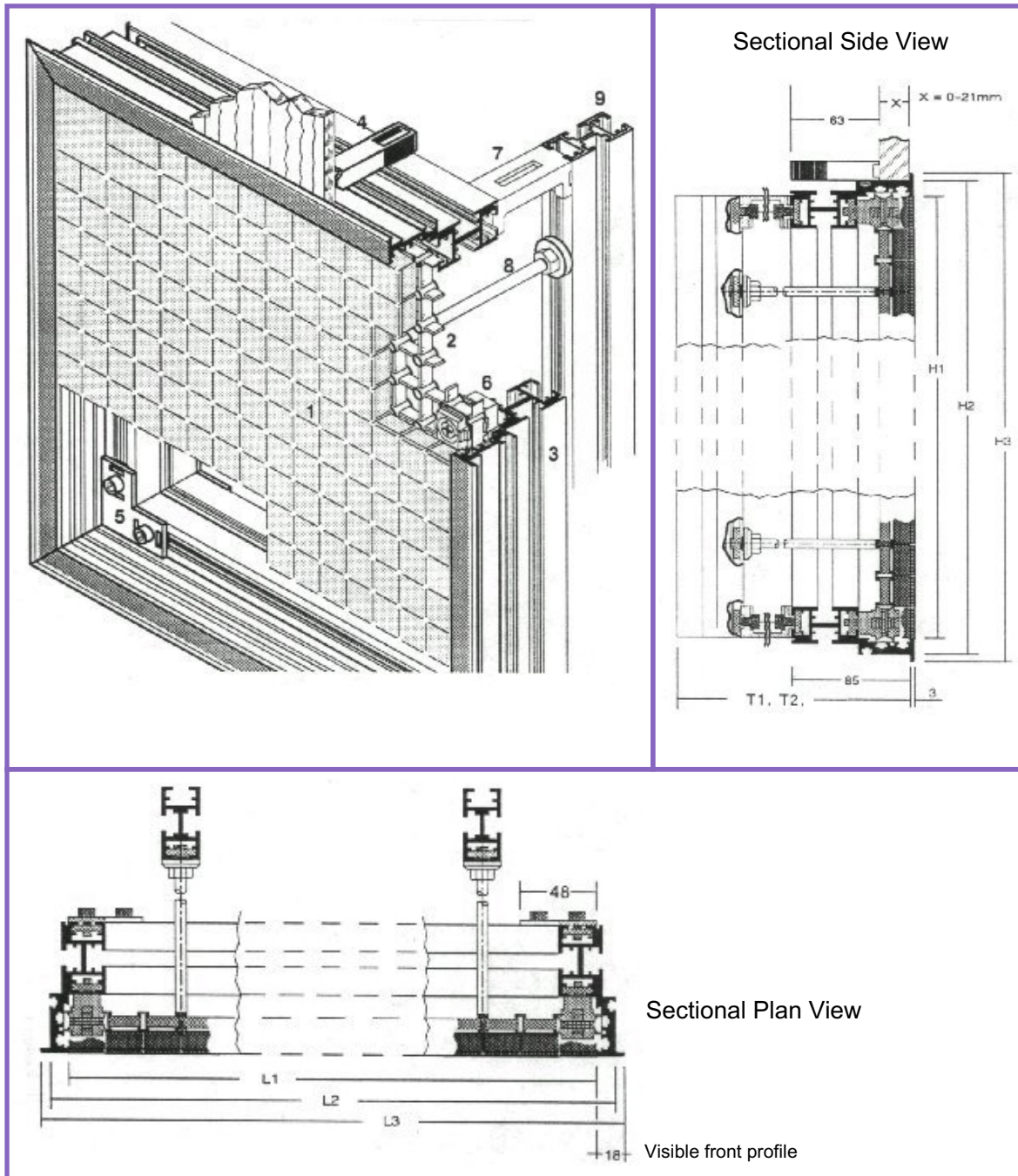


Front Profile SP23 / SP04



Key:

- | | |
|------------------------|---------------------|
| 1 = Tile SM24 | Makrolon ® |
| 2 = Grid 576x288 | Zn die-cast |
| 3 = Front profile SP23 | Anodised* Aluminium |
| 4 = Fixing clamp | Zn die-cast |
| 5 = Corner bracket | Steel |
| 6 = Grid mounting set | Plastic |
| 7 = Profile Support | Aluminium |
| 8 = Pillar | Aluminium |
| 9 = Rear Profile SP04 | Aluminium |

* Standard Silver

Dimensions:

- L1 = Nominal mosaic area
L2 = Rear frame
L3 = Outer frame
L4 = Required aperture size
H1 = Nominal mosaic area
H2 = Rear frame
H3 = Outer frame
H4 = Required aperture size
T1 = Unit depth with 120 pillar
T2 = Unit depth with 180 pillar

All in mm

- nx24
nx24+ (2x12)
nx24+ (2x18)
nx24+ (2x13)
nx24
nx24+ (2x12)
nx24+ (2x18)
nx24+ (2x13)
193 } *Dependant on*
253 } *equipment depth /*
cabling.

©TEW 2008. All rights reserved. This is the property of TEW. Unless you obtain the express written permission of TEW, no part shall be used, reproduced, divulged or made available to any third party and disclosure to you does not confer any right or licence.

Ref: o80808



UK
www.tew.co.uk

Germany
www.tew-eng.de

Australia
www.tew-eng.com.au

Providing worldwide solutions

Automation • Control & Indication • Information & Display