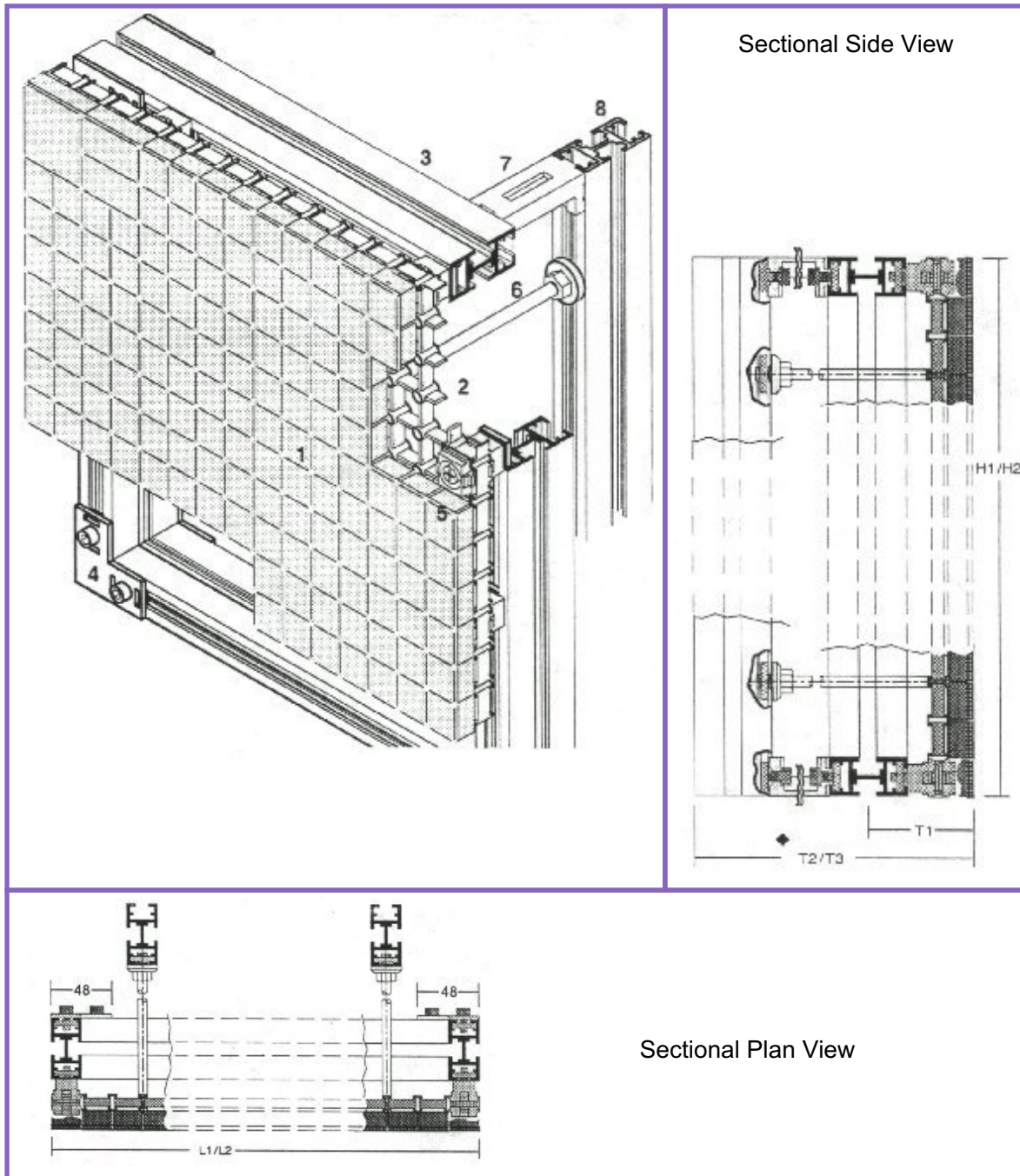


Front Profile SP04 / SP04



Key:

- | | |
|--------------------------|---------------------|
| 1 = Tile SM24 | Makrolon® |
| 2 = Grid 288x576 | Zn die-cast |
| 3 = Support Profile SP04 | Anodised* Aluminium |
| 4 = Corner bracket | Steel |
| 5 = Grid mounting set | Plastic |
| 6 = Pillar | Aluminium |
| 7 = Profile support | Aluminium |
| 8 = Rear Profile SP04 | Aluminium |

Dimensions:

- | | |
|---------------------------------|------|
| L1 = Nominal mosaic area | nx24 |
| L2 = Rear frame | nx24 |
| H1 = Nominal mosaic area | nx24 |
| H2 = Rear frame | nx24 |
| T1 = Fixing location | 64 |
| T2 = Unit depth with pillar 120 | 196 |
| T3 = Unit depth with pillar 180 | 256 |

All in mm

©TEW 2008. All rights reserved. This is the property of TEW. Unless you obtain the express written permission of TEW, no part shall be used, reproduced, divulged or made available to any third party and disclosure to you does not confer any right or licence.

Ref: o8o8o8



UK
www.tew.co.uk

Germany
www.tew-eng.de

Australia
www.tew-eng.com.au

Providing worldwide solutions

Automation • Control & Indication • Information & Display